


Shropshire Home

Spring 2024





A photograph of a field of yellow flowers, likely a species of Aster, in the foreground. The flowers are bright yellow with many small, daisy-like heads. The background features a large, golden-brown field, possibly a harvested crop field, and a line of green trees under a cloudy sky. The text "Shropshire Home" is overlaid in the upper left area.

Shropshire Home

Summer 2024



Shropshire Home

Autumn 2024





Shropshire Home

Winter 2025













Madder, logwood, fustic







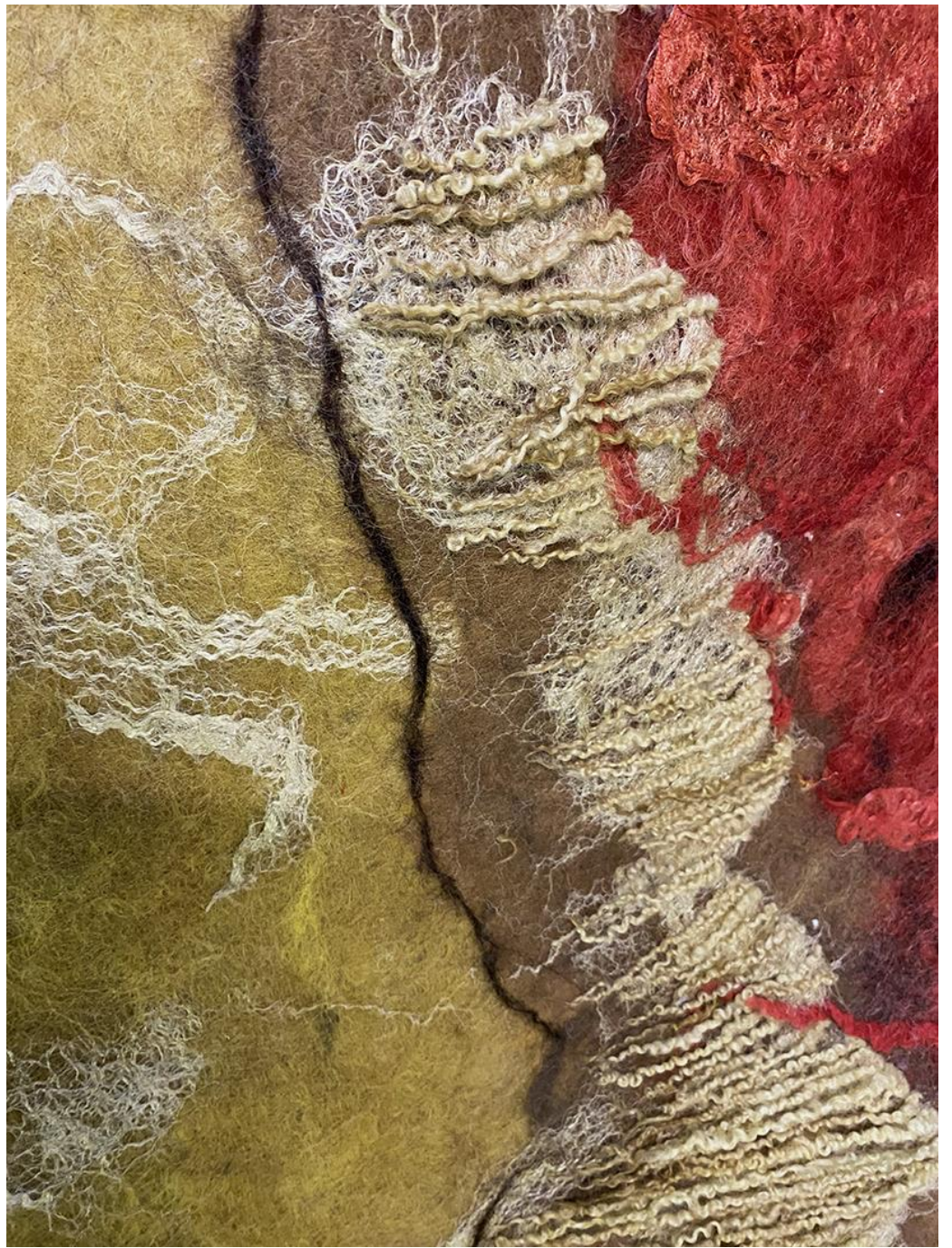
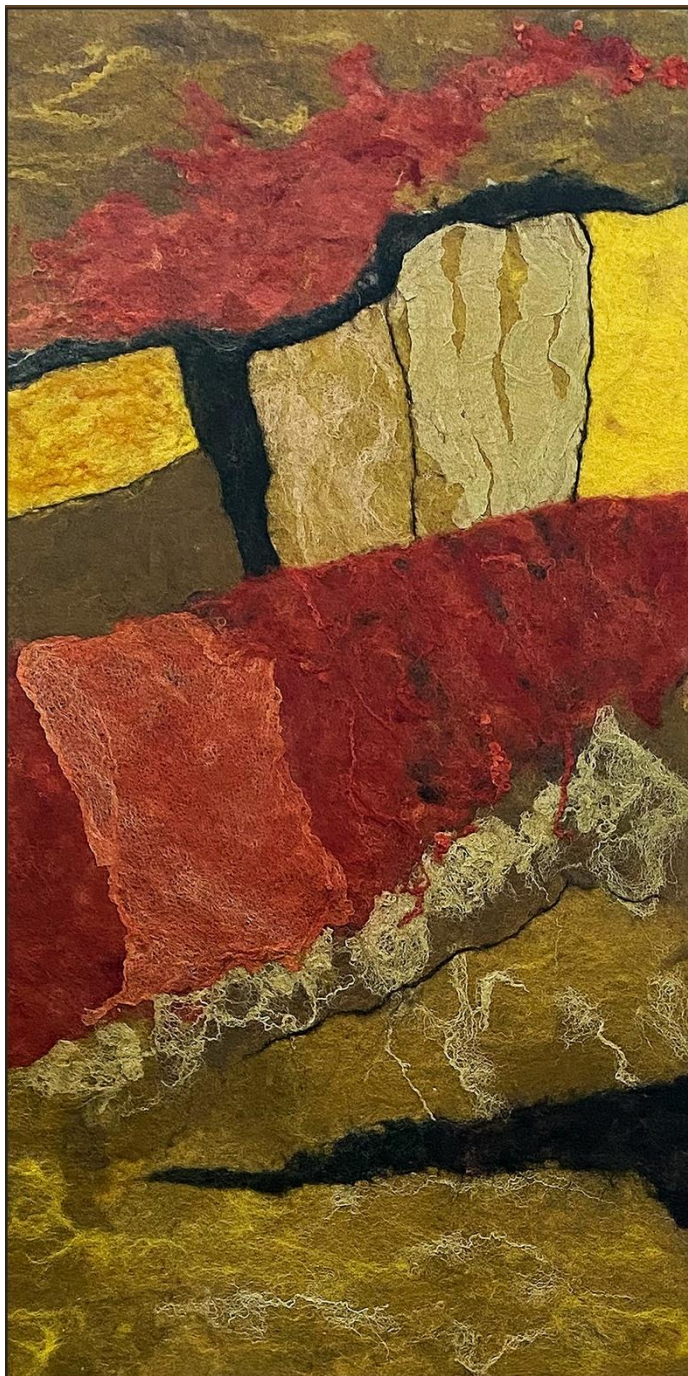


## Cowarne Mill Flock

### Pedigree Leicester Longwool Sheep









The care instructions for your felted artwork, "A Sense of Place," are thoughtfully designed to ensure its longevity and vibrant appearance.

**Recommended care**

- 1. Dusting: Use a feather-type duster twice a year (in autumn and spring) to gently remove dust from the surface and keep the felt fresh.
- 2. Steaming: You can use a hand steamer to freshen the fabric if needed.
- 3.Moth Protection: Spray the felt with a moth protection spray during your bi-annual cleaning routine. Moths are unlikely to affect the artwork if it is placed in a well-lit, frequently used area.
- 4. Sunlight Protection: Avoid placing the artwork in direct sunlight or near windows, as harsh natural light can cause the colours to fade. The naturally dyed fibres will maintain their colour better when kept away from such conditions.
- 5. Natural Dye Consideration: Although the dyes used are relatively lightfast, it's normal for the colours to mellow over time.

By following these tips, you can preserve the beauty of your Shropshire-inspired felted artwork for many years to come. Enjoy!